



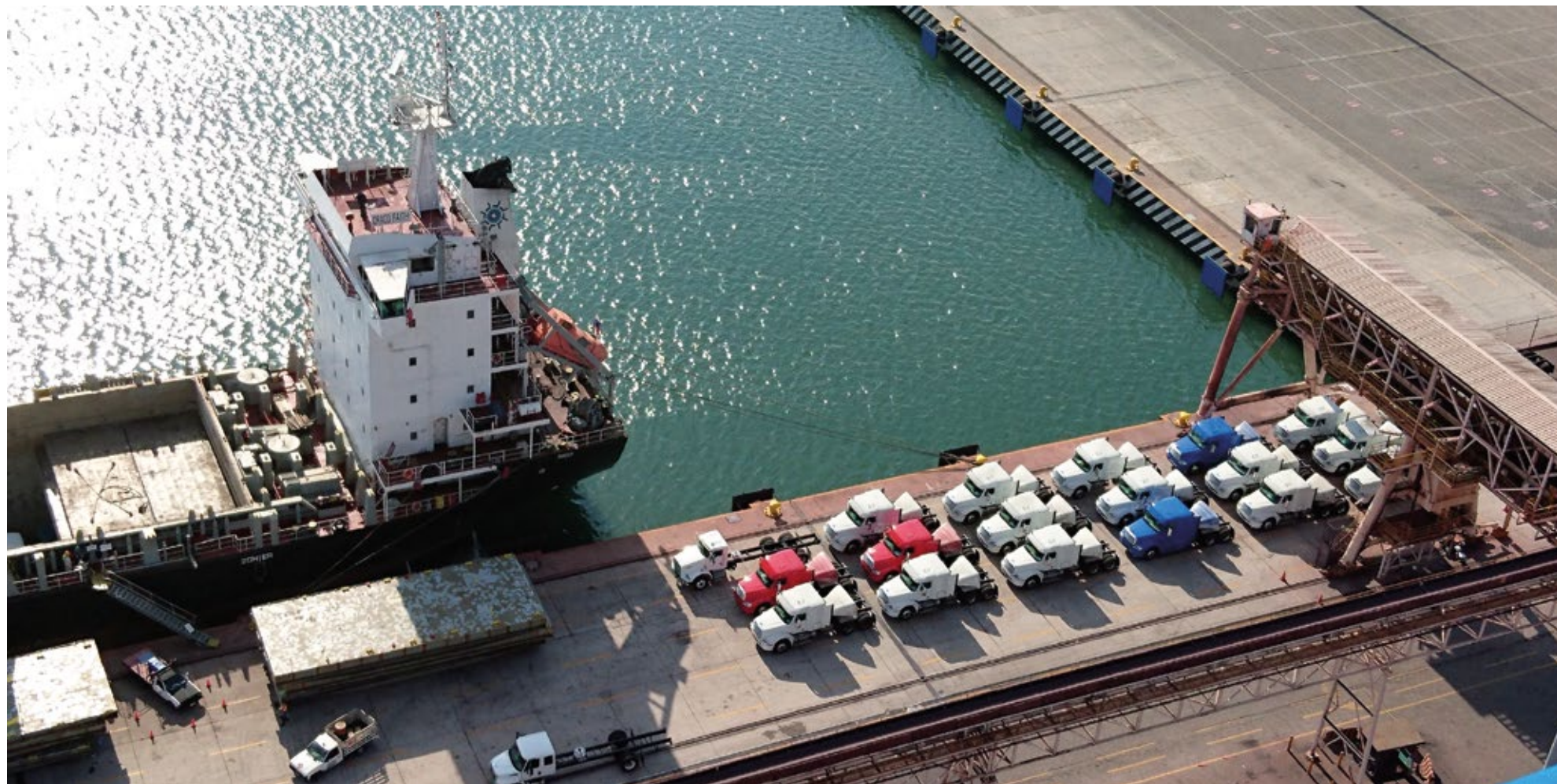
SMT

SEA MARINE TRANSPORT LLC



ALL ABOARD FOR SUCCESS

SHIPPING LINE - VESSEL OPERATORS



SEA MARINE TRANSPORT (SMT) is a shipping company highly qualified with over 35 years of experience. We specialized in chartering and operating vessels in liner service and multipurpose vessels, high and heavy Ro-Ro, PCC, general cargo ships and bulk carriers.

We work closely with our customers to provide a reliable and efficient Shipping Service to meet their shipping needs.

We have a close relationship with other owners and shipping lines and offer long term sharing spaces. Such spaces can be offered on regular and semi-regular bases which allows us to reach agreements and business according to our customer requirements.



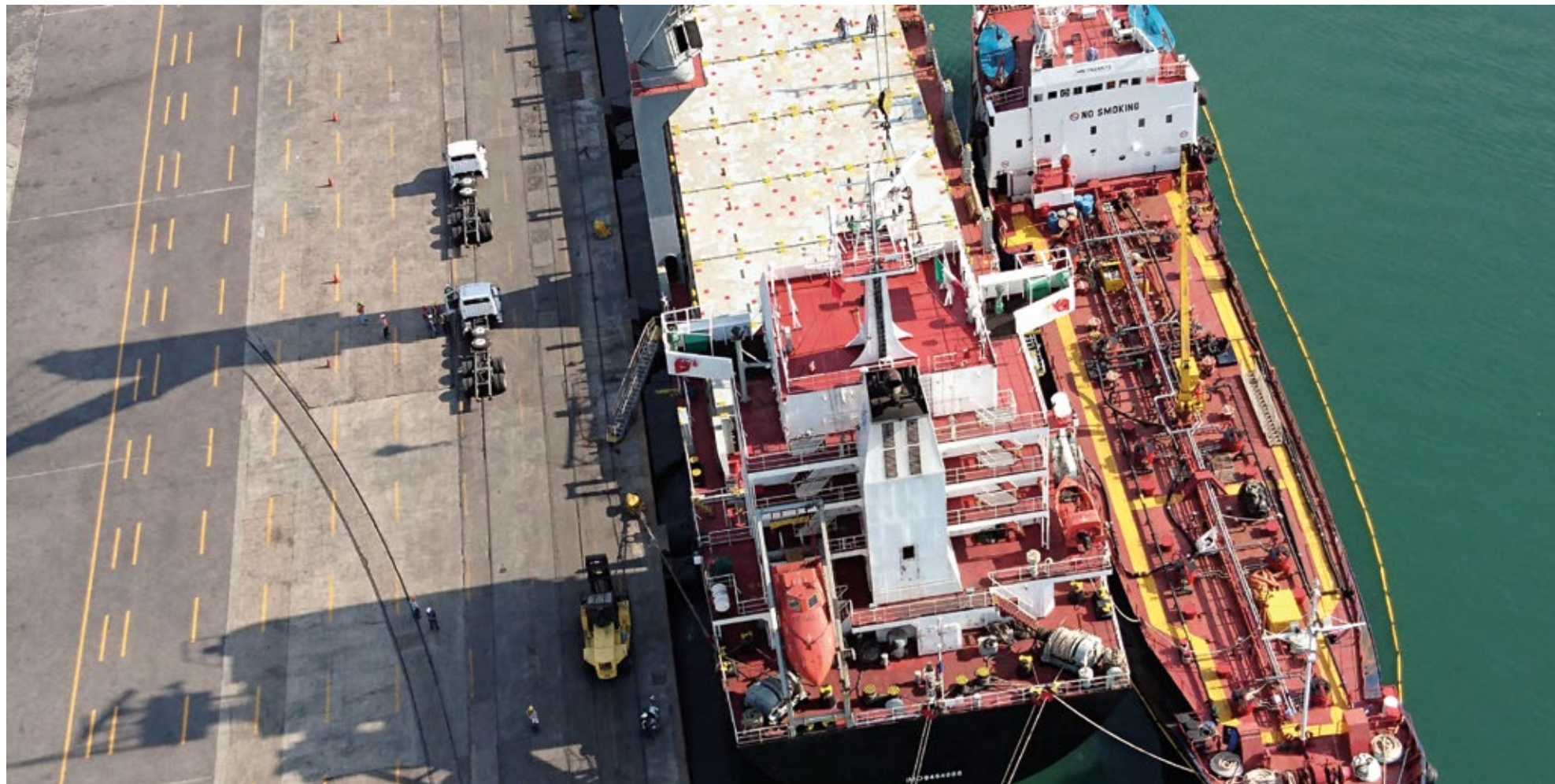


Also, SMT has a modern fleet of multipurpose, tween, single-deckers and Ro-Ro vessels available.

Our company operates with a high quality standards when handling cargoes to reduce damage during the shipping process.

SMT has formed successful relationships in South America, the Caribbean, Latin America and The Far East to provide shipping services to our customers from the US GULF / Mexico and US WC / WC WCSA Mexico, the Caribbean, Latin America, Central America, The Far East and North Coast South America..

As a result, SMT can ensure a diverse base of approximately 1,500 customers in 17 countries for Oil & Gas, Mining, Metal Industries, Steel Manufacturers and Dealers of cars and trucks, Heavy Industry, Project and Bulk Cargo.



SEA MARINE TRANSPORT OFFERS ROUTES FOR:
ROLLING, PROJECT CARGOES & BULK CARGO



OUR ROUTES

ASIA

Lianyungang, Shanghai, Tianjin / Xingang, Kobe, Yokohama, Inchon, Pusan to:

Mazatlán, Manzanillo
West Coast Central America
West Coast South America
(Caribbean and North Coast South America and Colombia)

PACIFIC

Manzanillo and Mazatlan, Mexico to:

Central America
Buenaventura, Colombia
Esmeraldas and Guayaquil, Ecuador
Callao, Peru
Iquique, Arica, San Antonio, Valparaiso Chile

ATLANTIC

US Gulf and Mexico Houston, Veracruz and Tampico to:

Buenaventura, Colombia
Esmeraldas and Guayaquil, Ecuador
Callao, Peru
Iquique, Arica, San Antonio, Valparaiso Chile

ATLANTIC US GULF, MEXICO, NCSA, CARIBBEAN

Rio Haina, Dominican Republic
Cartagena, Barranquilla and Santa Marta, Colombia
Cristobal, Panama



TRANSIT TIMES

PACIFIC

Manzanillo / Mazatlan to:

- 3 Days Quetzal
- 4 Days Acajutla
- 5 Days Caldera
- 9 Days Buenaventura
- 9 Days Esmeraldas
- 10 Days Guayaquil
- 14 Days Callao
- 16 Days Arica or Iquique
- 18 Days San Antonio / Valparaiso
- 20 Days Lirquen / Coronel

Direct Transit:

- 8 Days Quetzal
- 10 Days Callao



ATLANTIC

Houston to:

- 2 Days Tampico or Altamira
- 3 Days Veracruz
- 5 Days Puerto Barrios
- 5 Days Puerto Cortes
- 6 Days Puerto Limon
- 7 Days Barranquilla
- 8 Days Cartagena
- 10 Days Cristobal
- 11 Days Buenaventura
- 13 Days Esmeraldas
- 14 Days Guayaquil
- 16 Days Callao

ASIA	Manzanillo Mexico	Callao Peru	Valparaiso Chile
Lianyungang	40 Days	40 Days	47 Days
Shanghai	32 Days	38 Days	45 Days
Tianjin / Xingang	28 Days	35 Days	40 Days

During each voyage, our team is tracking vessels through high technology GPS to keep our customers informed in real time with the geographical position and sending them specific reports on the route before loading and discharging their commodities.

SERVICE FOR

ROLLING CARGO, GENERAL AND PROJECT CARGOES

FROM MANZANILLO, MEXICO

TO COLOMBIA, ECUADOR, PERU AND CHILE

IN DIRECT ROUTE, ALSO IMPORTING TO MEXICO EVERY

10 DAYS

SERVICE FOR

ROLLING CARGO, GENERAL AND PROJECT CARGOES

FROM HOUSTON, USA TAMPICO & VERACRUZ, MEXICO

TO COLOMBIA, VENEZUELA & DOMINICAN REPUBLIC

IN DIRECT ROUTE EVERY

20 DAYS

SEA MARINE TRANSPORT OFFERS ROUTES FOR:
ROLLING, PROJECT CARGOES & BULK CARGO



- Service with Insuperable frequency.
- Market best rates.
- Time to response a quotation, maximum between 24 to 48 hours.

DIRECT SERVICES

FROM:

Manzanillo and/or Mazatlan, Mexico
Manzanillo and/or Mazatlan, Mexico
Manzanillo and/or Mazatlan, Mexico
Manzanillo and/or Mazatlan, Mexico
Manzanillo and/or Mazatlan, Mexico
Veracruz, Mexico
Altamira, Tampico & Veracruz, Mexico

TO:

Callao, Peru
Buenaventura, Colombia
San Antonio & Valparaiso, Chile
Esmeraldas & Guayaquil, Ecuador
Arica, Chile
Rio Haina, Dominican Republic
Cartagena & Barranquilla, Colombia

EVERY:

30 Days
45 Days
45 Days
45 Days
45 Days*
45 Days*
45 Days

*Subject to inducement



EUROPE SERVICE

Bilbao-Spain, Antwerp-Belgium
and/or Bremerhaven-Germany → Mexican Gulf, Central America
and West Coast South America ←



STOWAGE PLAN

We create stowage plans based on weight and size of the cargo to prevent damages , we secure the cargo with 6 front bands slings and 6 back slings.



We provide highly qualified excellent logistics and operational staff and Quality Engineers at the Mazatlan, Manzanillo, Tianjin, Shanghai, Callao Ports. Our Staff carefully inspects the cargoes, coordinate operations, reports the development in real-time operations.

Once the operation is completed, we will deliver to each customer a written report detailing the inspection of the cargo. SMT develops stowage plans to secure the cargo shipments.



BUSINESS ALLIANCE FOR SECURE COMMERCE
BASC CERTIFIED
USAELP00050-1-1



Our fleet consist in 5 sisters modern 2008-2013, MPP, single or tween deck (take-away type), 9000 DWT box, geared 2 X 40 swl (Comb. abt 70mt)

Sea Marine Transport is always committed to quality service for our customer shipping needs.





MORE THAN
78,000
 VEHICLES AND TRUCKS
 TRANSPORTED

VEHICLES & TRUCKS

SMT has extensive experience in handling and transporting cars, new and used trucks and machinery. We transport from the East and West Coast of Mexico, Gulf of United States, bound to the West Coast South America to the Coast Western South America and Central America.

During the last 14 years, we have transported more than 78,000 trucks from Tianjin, Houston and Mexico to Peru, Ecuador, Chile and Colombia on Lo / Lo and Ro / Ro vessels and we have consolidated a wide experience in the transportation of heavy and oversized machinery for the construction and mining industry.

All the cargoes are carried on our modern vessel fleet.



**OIL & GAS INDUSTRY
 AND BREAK BULK CARGO**

SMT team has extensive experience in chartering vessels for oversized and project cargoes combining the Regular Line and No Regular Services in vessels ranging from 2,500 DWT and lifting capacities from 40 up to 300/500 tons to load transformers or reactors.

SMT has a Prevention Program (DPP) which is implemented in all our traffics and services.





GENERAL CARGO & PROJECT CARGO

SMT serves the metal industry, minning, builder, energy and railroad industry.

During the last 6 years, we carried transformers, rail cars, telescopic cranes, unarmed plants, steel tanks, construction machinery, chassis, dumps trucks and cauldrons. This routes where to Colombia, Ecuador, Peru, Chile, across the Pacific and into the Atlantic to Colombia, Venezuela an the Dominican Republic.

This type of cargo shipment make us the market leaders.



BULK, CONCENTRATES & METALS

Last year, SMT had the opportunity to charter more than 136 vessels, in T / C and Voyage Charter and Space Charter. The transportation cargo included, general cargo, steel, cargo projects, trucks and over sized pieces.

The routes where along from Mexico, US Gulf to the East and West Coast and Central of South America.

SMT has coordinated several shipments of bulk cargo vessels for loading bagged rice in South America.

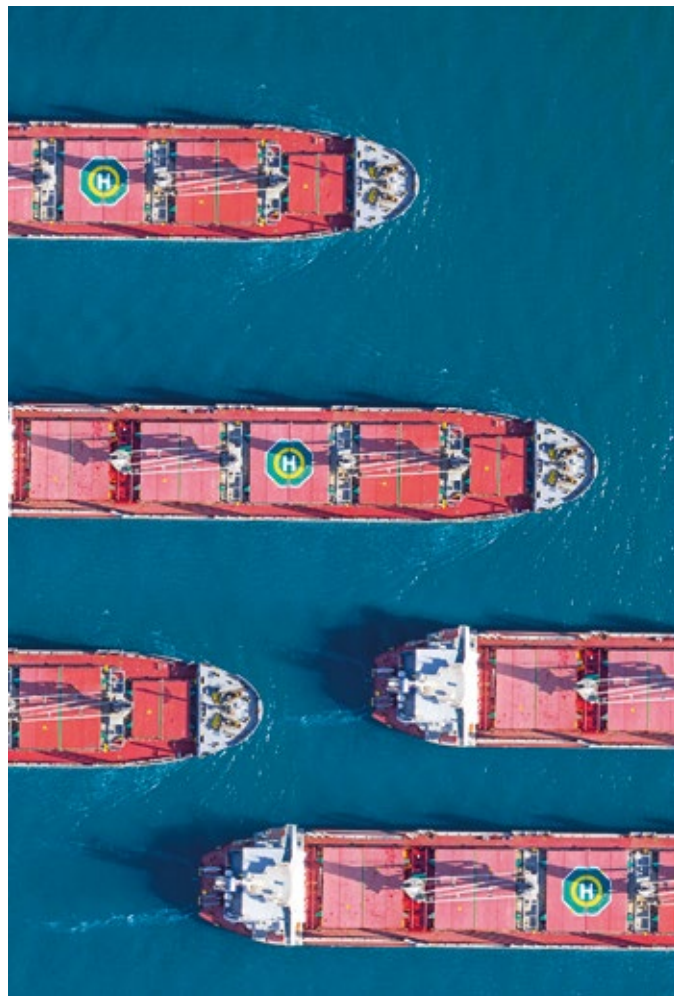


WE HAVE A FLEET OF

5 **TWIN SHIPS**

IN THE SAME SERVICE

We have a state-of-the-art fleet our vessels have a capacity exceeding 63,000 Deadweight Tonnage and can feature up to 5 holds and 4 cranes, depending on the configuration of each ship.



OUR VESSELS

SK TYPE-1

ACTIVE

Flag: Panama
Type: General Cargo
IMO: 9574365
MMSI: 355680000
Call Sign: 3FTG3

Deadweight: 9070
Gross Tonnage: 7460
LOA x BE: 122m x 20m
Year built: 2010
Status: Active



SK TYPE-2

ACTIVE

Flag: St Vincent Grenadines
Type: General Cargo
IMO: 9525417
MMSI: 376746000
Call Sign: J8B3932

Deadweight: 9032
7460
LOA x BE: 122m x 20m
Year built: 2009
Status: Active



SK TYPE 3

ACTIVE

Flag: Panama
Type: General Cargo
IMO: 9574377
MMSI: 355760000
Call Sign: 3FVJ3Gross

Deadweight: 9023 Gross
Gross Tonnage: 7460
LOA x BE: 122m x 20m
Year built: 2010
Status: Active



SK TYPE 4

ACTIVE

Flag: Panama
Type: General Cargo
IMO: 9454058
MMSI: 357513000
Call Sign: HP5457

Deadweight: 9032
Gross Tonnage: 7460
LOA x BE: 122m x 20m
Year built: 2008
Status: Active



SK TYPE 5

ACTIVE

Flag: Panama
Type: General Cargo
IMO: 9525429
MMSI: 370594000
Call Sign: 3FFC8

Deadweight: 9032
Gross Tonnage: 7460
LOA x BE: 122m x 19.8m
Year built: 2009
Status: Active



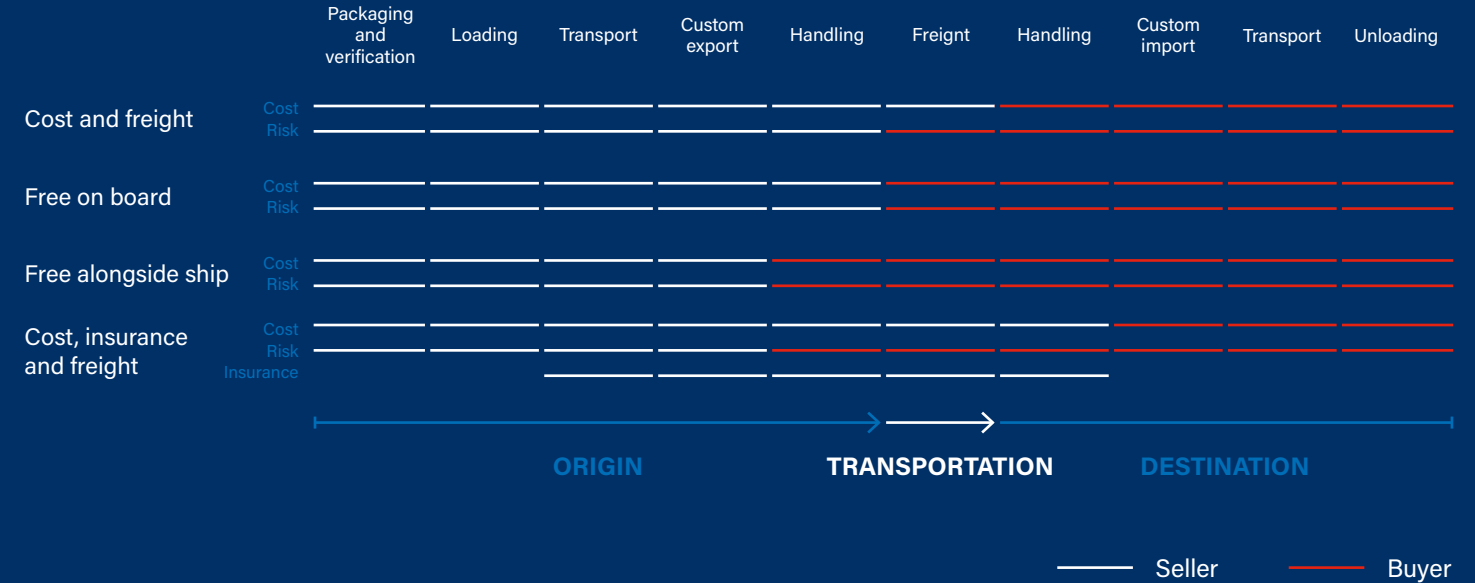
INCOTERMS 2020 ICC

RULES FOR ANY MODE OF TRANSPORT



INCOTERMS 2020 ICC

RULES FOR MARITIME TRANSPORT & INLAND WATERWAYS



INCOTERMS. It stands for "International Commercial Terms." These are rules that define who is responsible for each aspect of international transactions.



SHIPPING & OPERATIONAL TERMS



The ship/carrier does not assume any costs; loading and unloading are the responsibility of the cargo.



The ship/carrier only assumes the cost of unloading at the destination port.



Opposite to FILO; in this case, the ship/carrier must assume the cost of loading.



Loading and unloading of the cargo are the responsibility of the ship/carrier.

MARITIME TRANSPORT RATES

THC (Terminal Handling Charge)

The cost charged by the terminal for container handling, including hook/terminal movement and vice versa.

BAF (Bunker Adjustment Factor)

Surcharge based on the cost of bunker fuel in the international market.

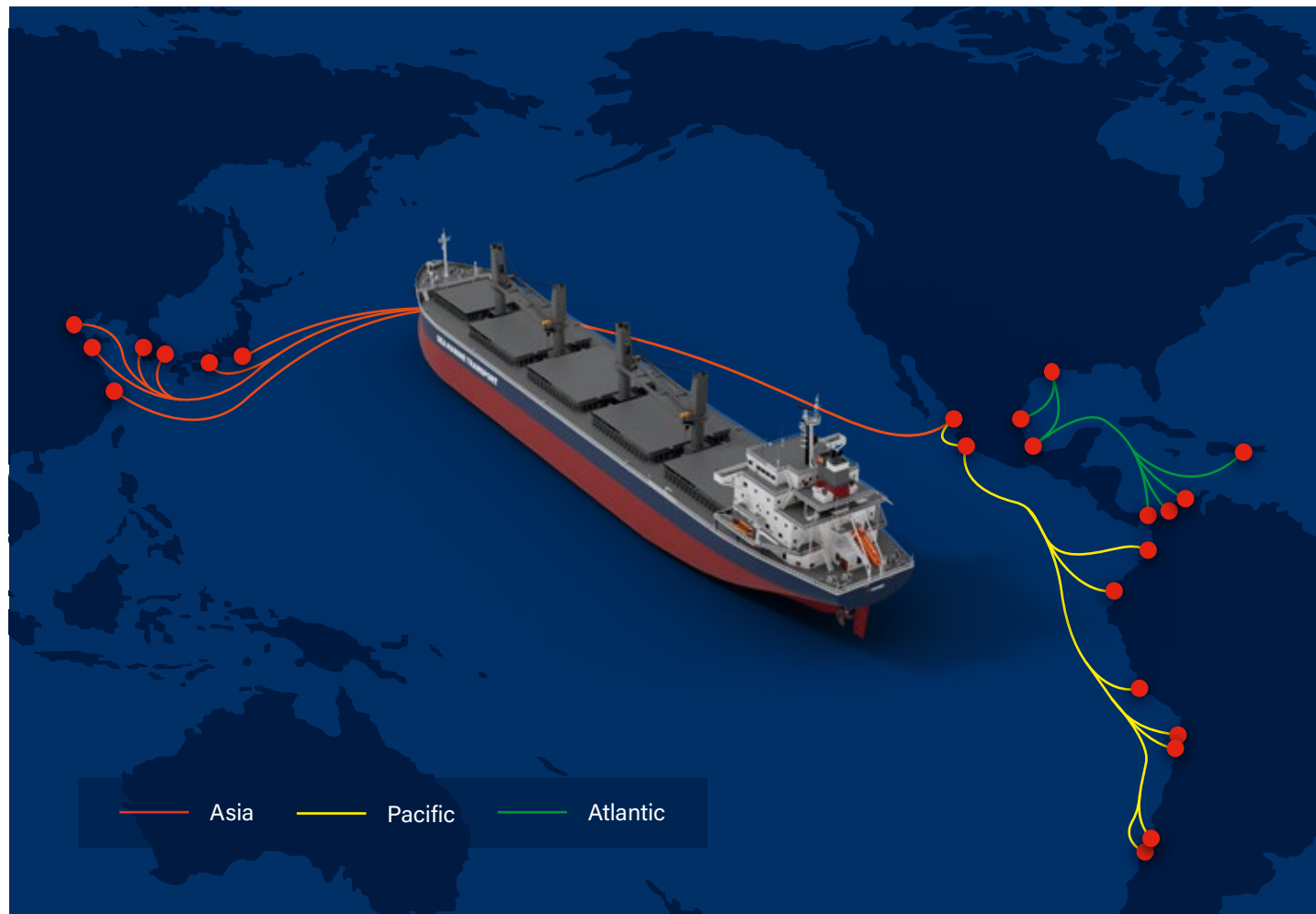
CAF (Currency Adjustment Factor)

Applied for variations related to currency exchange fluctuations.

HCS (Hazardous Cargo Surcharge)

For hazardous cargoes as per their classification code.





DISTANCE BETWEEN PORTS

PACIFIC

Manzanillo/Mazatlan, Mexico to:

Buenaventura, Col:
3465.79 Km (1871.38 Mi)
 Esmeraldas, Ecu:
3516.81 Km (1898.93 Mi)
 Guayaquil, Ecu:
3785.12 Km (2043.80 Mi)
 Callao, Per:
4611.65 Km (2490.09 Mi)
 Arica, Chl:
5679.67 Km (3066.78 Mi)
 Valparaiso, Chl:
7015.95 Km (3788.31 Mi)
 San Antonio, Chl:
7075.73 Km (3820.59 Mi)

ATLANTIC

Veracruz, Mexico to:

Cartagena, Col:
2777.48 Km (1499.72 Mi)
 Barranquilla, Col:
2778.95 Km (1500.51 Mi)
 Rio Haina, Dom:
2899.14 Km (1565.41 Mi)
 Puerto Cabello, Ven:
3401.82 Km (1836.84 Mi)

Houston, USA to:

Altamira, Mex:
948.12 Km (511.94 Mi)
 Tampico, Mex:
969.43 Km (523.45 Mi)
 Veracruz, Mex:
1282.50 Km (692.49 Mi)

ASIA

Manzanillo/Mazatlan, Mexico to:

Yokohama, Jpn:
11068.75 Km (5976.65 Mi)
 Kobe, Jpn:
11585.49 Km (6255.67 Mi)
 Pusan, Kor:
11872.79 Km (6410.80 Mi)
 Incheon, Kor:
12534.46 Km (6768.07 Mi)
 Shanghai, Chn:
7075.73 Km (3820.59 Mi)
 Xiamen, Chn:
7075.73 Km (3820.59 Mi)

(Note: "mi" = nautical mile)



TYPES OF SHIPS IN MARITIME TRANSPORT

GENERAL CARGO SHIP

Built with a single cargo hold, they can be configured in various ways for the transport of dry cargo, carrying large dimensions and overloading. They contain containers to adapt for liquid and refrigerated cargo. They have cranes in the center for their own loading and unloading.

BULK CARRIER

Configurations: Wood/materials/metals. They have a single continuous deck with compartments. Their reinforced holds resist shocks. Their design of a single cargo hold emphasizes their capacity to transport raw materials in bulk, with their own cranes for loading and unloading and separate compartments.

CONTAINER SHIP

Configurations: Dry cargo/refrigerated cargo/liquids. Designed with a single deck and a cargo hold, they can be adapted to accommodate containers.

ROLL ON / ROLL OFF (RORO)

Transport only wheeled goods that are loaded and unloaded using vehicles like tractors across multiple decks connected via ramps.



REFRIGERATED SHIP

Depending on the type of cargo, these can maintain a temperature between -12 and -30°C. Their holds are equipped with shelves for storage and several cranes for moving goods from the holds.

CRUDE OIL CARRIER

Ships capable of transporting between 70,000 and 500,000 tons, with capacities up to 4,000,000 barrels.

LNG CARRIER

Transports natural gas in liquid form. These ships feature large spherical or cylindrical tanks located on the deck.

CHEMICAL TANKER

Small in size, they transport chemical products. They have a complex array of tanks distributed across the deck. Their classification depends on the type of cargo aggressiveness. These ships must be able to transport any of the 3 types.



OFFICES & AGENTS SMT



USA

SEA MARINE TRANSPORT LLC

4900 Woodway Drive Suite 1110,
Houston, TX 77056

P.+1 713-621-8884, +1 713-621-8886

contact@shipsmt.com

REGIONAL MAIN OFFICES



MEXICO

Aguascalientes 199, int. 402, C.P. 06100

Col. Hipodromo, Cuauhtemoc, Cd. de México.

P. +(52) 55 5290-6012, +(52) 55 5290-7695

contact@shipsmt.com



Sea Marine Transport LLC

For more information please visit our web page

www.seamarinetransport.com

Our dedicated agents and representatives in many countries provide personalized support and expert guidance. Reach out to your local contact for tailored solutions and assistance.

AGENTS



Shanghai, China



Buenaventura, Colombia



Corinto, Nicaragua



Guayaquil, Ecuador



Lima, Callao, Peru



Manta, Ecuador



Puerto Quetzal, Guatemala



Puerto Caldera, Costa Rica



Valparaiso, Chile



2025 CALENDAR



2026 CALENDAR



January

S	M	T	W	T	F	S
			1	2	3	4
5	6	7	8	9	10	11
12	13	14	15	16	17	18
19	20	21	22	23	24	25
26	27	28	29	30	31	

February

S	M	T	W	T	F	S
						1
2	3	4	5	6	7	8
9	10	11	12	13	14	15
16	17	18	19	20	21	22
23	24	25	26	27	28	

March

S	M	T	W	T	F	S
						1
2	3	4	5	6	7	8
9	10	11	12	13	14	15
16	17	18	19	20	21	22
23	24	25	26	27	28	29
30	31					

April

S	M	T	W	T	F	S
		1	2	3	4	5
6	7	8	9	10	11	12
13	14	15	16	17	18	19
20	21	22	23	25	25	26
27	28	29	30			

January

S	M	T	W	T	F	S
				1	2	3
4	5	6	7	8	9	10
11	12	13	14	15	16	17
18	19	20	21	22	23	24
25	26	27	28	29	30	31

February

S	M	T	W	T	F	S
1	2	3	4	5	6	7
8	9	10	11	12	13	14
15	16	17	18	19	20	21
22	23	24	25	26	27	28

March

S	M	T	W	T	F	S
1	2	3	4	5	6	7
8	9	10	11	12	13	14
15	16	17	18	19	20	21
22	23	24	25	26	27	28
29	30	31				

April

S	M	T	W	T	F	S
			1	2	3	4
5	6	7	8	9	10	11
12	13	14	15	16	17	18
19	20	21	22	23	24	25
26	27	28	29	30		

May

S	M	T	W	T	F	S
				1	2	3
4	5	6	7	8	9	10
11	12	13	14	15	16	17
18	19	20	21	22	23	24
25	26	27	28	29	30	31

June

S	M	T	W	T	F	S
1	2	3	4	5	6	7
8	9	10	11	12	13	14
15	16	17	18	19	20	21
22	23	24	25	26	27	28
29	30					

July

S	M	T	W	T	F	S
		1	2	3	4	5
6	7	8	9	10	11	12
13	14	15	16	17	18	19
20	21	22	23	25	25	26
27	28	29	30	31		

August

S	M	T	W	T	F	S
					1	2
3	4	5	6	7	8	9
10	11	12	13	14	15	16
17	18	19	20	21	22	23
24	25	26	27	28	29	30
31						

May

S	M	T	W	T	F	S
					1	2
3	4	5	6	7	8	9
10	11	12	13	14	15	16
17	18	19	20	21	22	23
24	25	26	27	28	29	30
31						

June

S	M	T	W	T	F	S
	1	2	3	4	5	6
7	8	9	10	11	12	13
14	15	16	17	18	19	20
21	22	23	24	25	26	27
28	29	30				

July

S	M	T	W	T	F	S
			1	2	3	4
5	6	7	8	9	10	11
12	13	14	15	16	17	18
19	20	21	22	23	24	25
26	27	28	29	30	31	

August

S	M	T	W	T	F	S
						1
2	3	4	5	6	7	8
9	10	11	12	13	14	15
16	17	18	19	20	21	22
23	24	25	26	27	28	29
30	31					

September

S	M	T	W	T	F	S
	1	2	3	4	5	6
7	8	9	10	11	12	13
14	15	16	17	18	19	20
21	22	23	24	25	26	27
28	29	30				

October

S	M	T	W	T	F	S
			1	2	3	4
5	6	7	8	9	10	11
12	13	14	15	16	17	18
19	20	21	22	23	24	25
26	27	28	29	30	31	

November

S	M	T	W	T	F	S
						1
2	3	4	5	6	7	8
9	10	11	12	13	14	15
16	17	18	19	20	21	22
23	24	25	26	27	28	29
30						

December

S	M	T	W	T	F	S
	1	2	3	4	5	6
7	8	9	10	11	12	13
14	15	16	17	18	19	20
21	22	23	24	25	26	27
28	29	30	31			

September

S	M	T	W	T	F	S
		1	2	3	4	5
6	7	8	9	10	11	12
13	14	15	16	17	18	19
20	21	22	23	25	25	26
27	28	29	30			

October

S	M	T	W	T	F	S
				1	2	3
4	5	6	7	8	9	10
11	12	13	14	15	16	17
18	19	20	21	22	23	24
25	26	27	28	29	30	31

November

S	M	T	W	T	F	S
1	2	3	4	5	6	7
8	9	10	11	12	13	14
15	16	17	18	19	20	21
22	23	24	25	26	27	28
29	30					

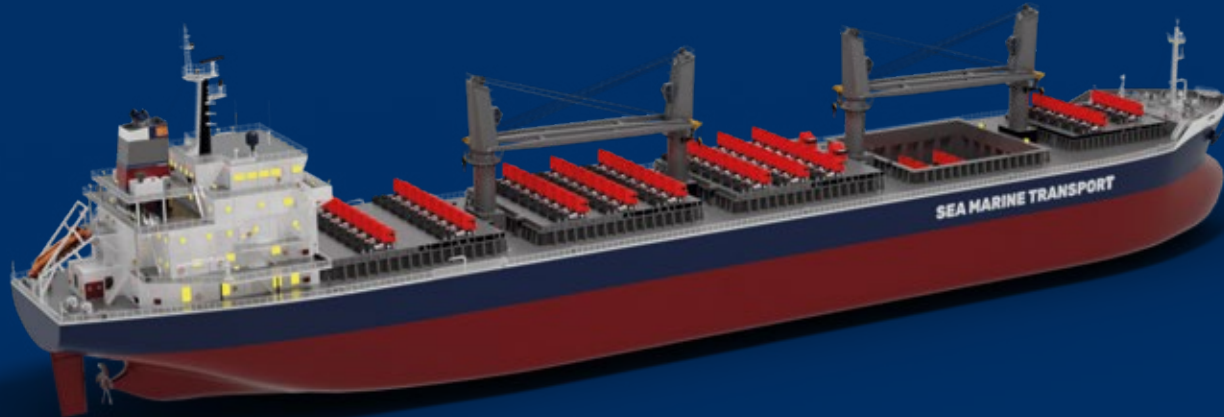
December

S	M	T	W	T	F	S
		1	2	3	4	5
6	7	8	9	10	11	12
13	14	15	16	17	18	19
20	21	22	23	25	25	26
27	28	29	30	31		



SMT

SEA MARINE TRANSPORT LLC



THANK YOU FOR YOUR PREFERENCE

www.seamarinetransport.com